



ADVANCING
SUSTAINABLY

A LEADER IN THE SUSTAINABLE MANAGEMENT OF FOREST RESOURCES



APRIL Group is a leading producer of fibre, pulp, paper and paperboard with plantations and manufacturing operations in Riau Province, Indonesia

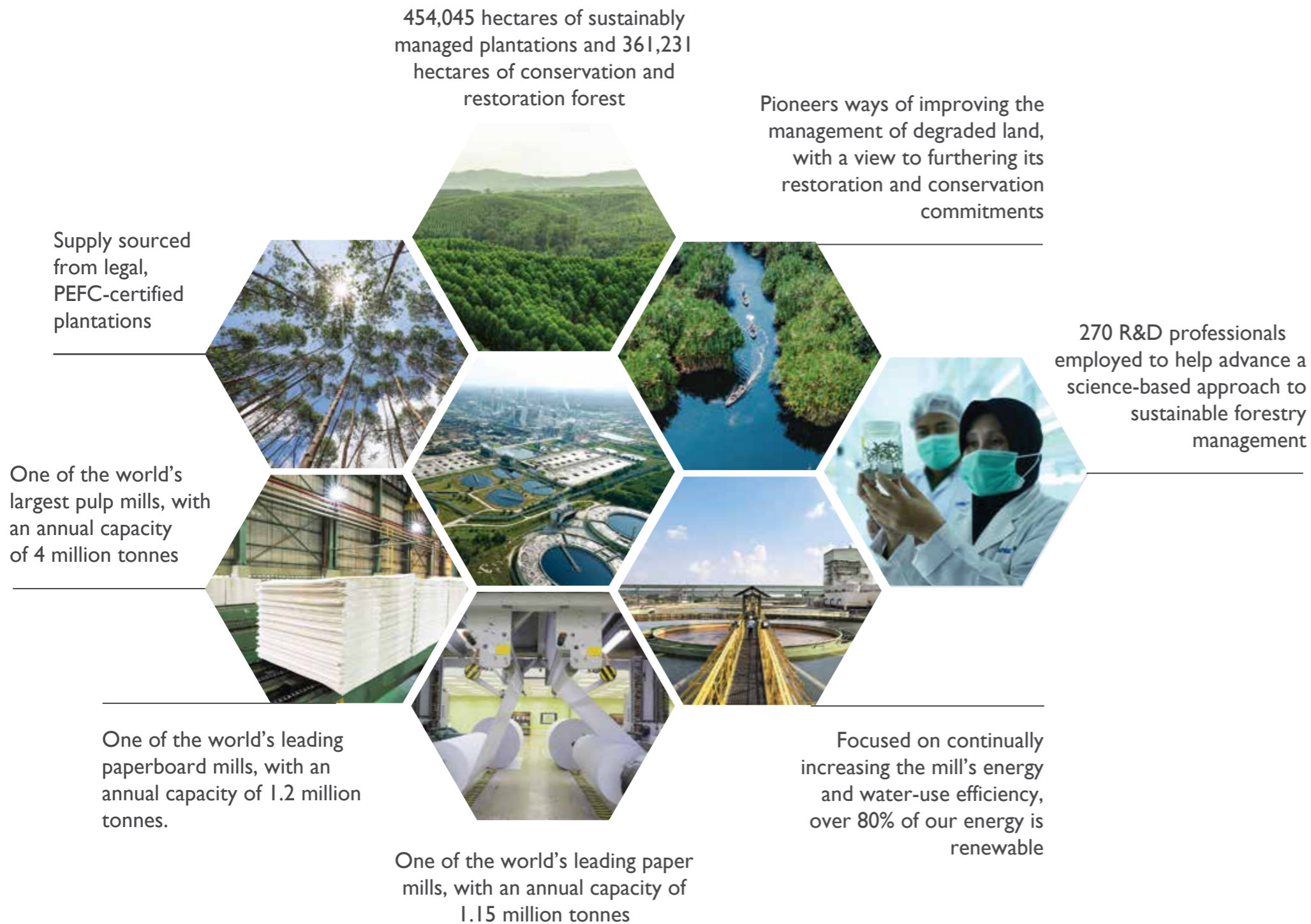
We make products that are used by millions of people every day in liquid packaging, printing and writing paper, tissues, shopping bags, food packaging, magazines and books. Our products are proudly marketed and sold in more than 110 countries around the world.

We are committed to sustainable forest management as part of a protection-production model that integrates economic and social development with environmental protection. This includes a commitment to zero deforestation, responsible peatland management and close alignment with the United Nation's Sustainable Development Goals (SDGs).

APRIL works with independent advisory groups to oversee the implementation of its Sustainable Forest Management Policy (SFMP) 2.0 and its efforts to advance science-based responsible peatland management.

WORLD CLASS OPERATIONS

Engineered For Efficiency



Certifications

Sustainable Plantation Forest Management (SPFM):

Since 2006, PT. Riau Andalan Pulp & Paper (PT. RAPP), the operating arm of APRIL Group, has been certified for SPFM, under the Indonesian Ecolabel Institute (LEI) standards.

Sustainable Production Forest Management (PHPL) certified by Ministry of Environment and Forestry:

PT. RAPP holds PHPL certification, a mandatory certification for all Indonesian forestry companies. This ensures PT. RAPP's compliance with production, ecological, and social requirements set by the Government of Indonesia.

Timber Legality Verification (SVLK):

The SVLK system was jointly developed by the Indonesian Government and the European Union to comply with anti-illegal logging laws. The company's products are accompanied by V-Legal document to certify the legality of the fiber from which the pulp and paper was produced.

OHSAS & ISO:

APRIL Group's operations in Riau Province, Indonesia are certified under OHSAS 18001 (Safety Management Systems), ISO 9001 (Quality Management Systems), and ISO 14001 (Environment Management Systems).

Singapore Green Label:

Our flagship PaperOne product has maintained this certifications since 2013, issued by the Singapore Environmental Council.

MANAGING LANDSCAPES

I-for-I Commitment

APRIL is committed to sustainable forest management as part of a protection-production model that integrates economic and social development with environmental protection. With a combined total of **361,231** ha of conservation and restoration forest areas, we are **80%** towards the achievement of our I-for-I commitment, where we protect or conserve one hectare of forest for every hectare of plantation.



Restorasi Ekosistem Riau (RER) is a pioneering private sector-led collaborative project to restore and conserve ecologically important high conservation value peat forest areas on Indonesia's Kampar Peninsula and Padang Island in the Province of Riau, Sumatra, Indonesia.

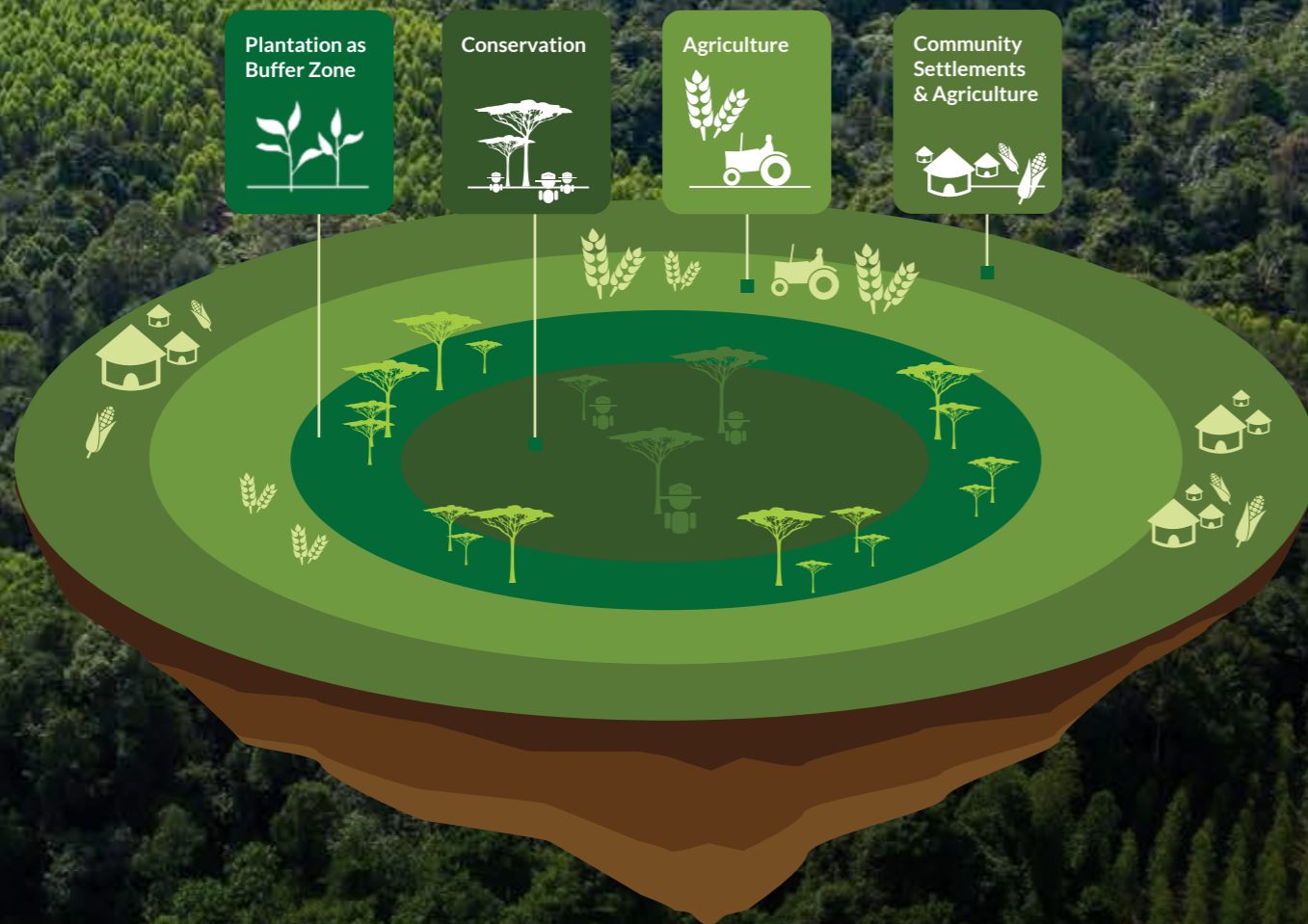
Established in 2013, RER began with the protection and restoration of 20,000 hectares of peat forest on the Kampar Peninsula. Today, the RER landscape comprises five concession areas totaling **150,693 hectares on the Peninsula and neighbouring Padang Island, operating under 60-year ecosystem restoration** licenses issued by the Indonesian Ministry of Environment and Forestry

RER contributes to our ongoing efforts to **achieve our I-for-I commitment**

SUSTAINABLE FOREST MANAGEMENT

Our Sustainable Forest Management Policy (SFMP) 2.0 includes commitments to no deforestation, responsible peatland management, conservation and restoration, community empowerment and engagement, and verification and transparency. A key element of our operations is our production-protection landscape model. This involves plantations on the perimeter of conservation areas that not only provide protection, but actively fund ecosystem restoration and protection.

Production-Protection



PLANTATION AND LANDSCAPE CONSERVATION APPROACH

Concession Area Guideline in Indonesia

125,000,000ha of forest in Indonesia
 68,000,000ha set aside for production forestry
 10,800,000ha allocated to pulp and paper sector

70% Industrial Plantations



30% Conservation and Other Uses

10% Conservation

+ 20% Local Communities Infrastructure Others

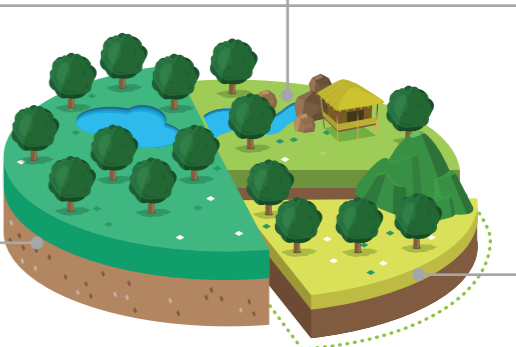
47% Conservation and Other Uses

24% Conservation

+ 23% Local Communities Infrastructure Others

APRIL Group Concession Area

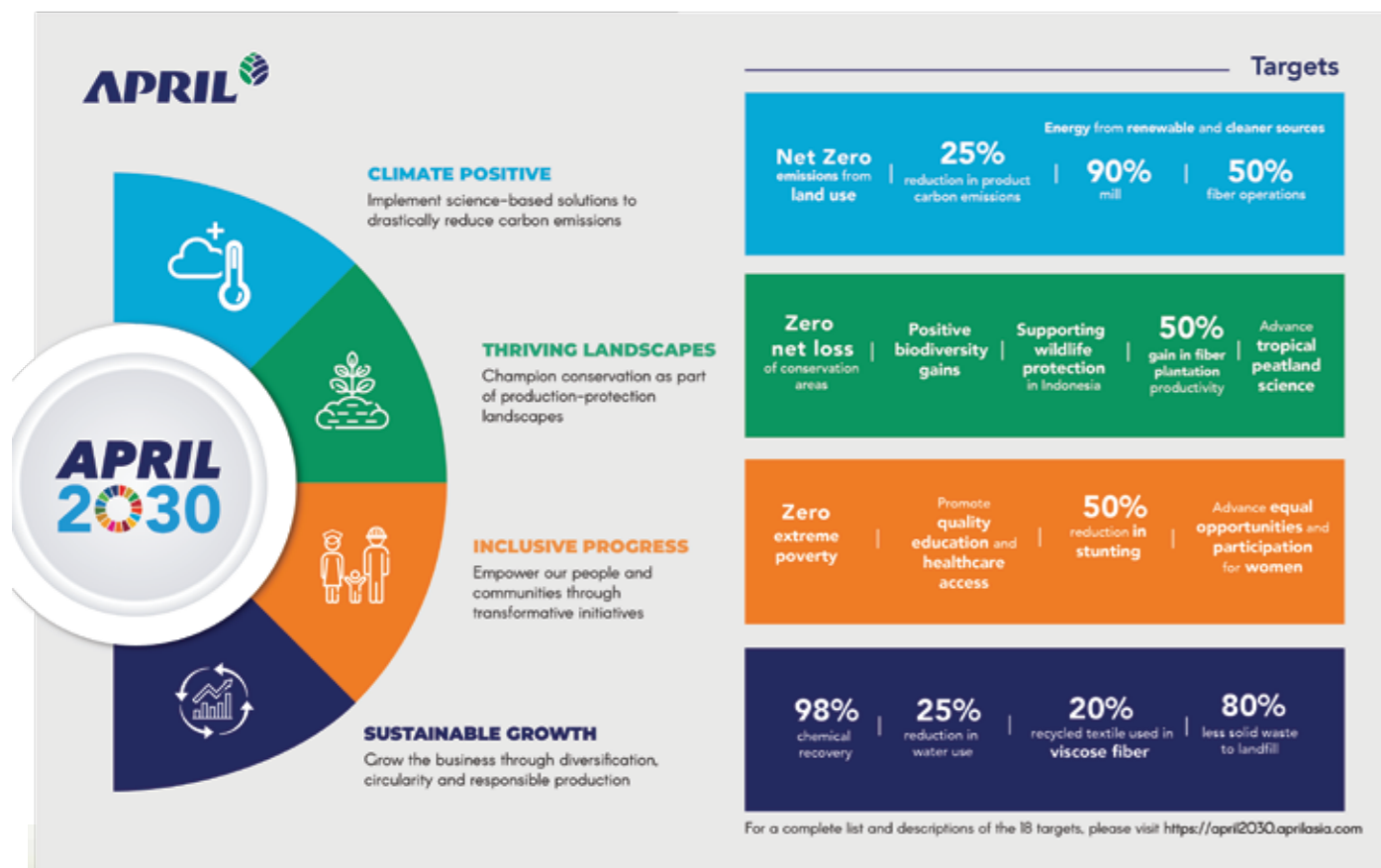
53% Industrial Plantations



447,984 ha used for plantations i.e. 54% of Indonesia's forest
 361,231 ha of forest under conservation and restoration

PROTECTING THE ENVIRONMENT, SUPPORTING COMMUNITIES

APRIL2030 is our commitment to deliver a **positive impact** on **climate, nature** and **people** while growing our business **sustainably**. By 2030, we will achieve net zero carbon emissions from our land use, positive measurable gains in nature and zero extreme poverty in our communities, while transforming our business for **sustainable growth**.



FIRE FREE VILLAGE PROGRAM



- Community based fire prevention program that addresses the root causes of fire through community engagement.
- Reduced burnt land area by >90% since 2015

Engaged with nearly 150 communities since 2015

902,872 ha covered under voluntary MoUs

39 communities have graduated as Fire Resilient Communities

Burnt area reduced by >90% since 2015

343 schools engaged in Fire Free programs since 2016

Integrated program base on education, capability building and incentives

An extension of APRIL's strict no-burn policy

More than half FFV have completely eliminated fire

Scaled across Southeast Asia through Fire Free Alliance

Complemented by Fire Danger Periods

ENHANCEMENT

Stunting Prevention



33,198 Supplementary feeding packages for toddler groups



207 Posyandu cadres from 295 Posyandu received trainings

Other Health Support



Public-Private Partnership with Ministry of Health providing primary health services

Infrastructure

Support the collaboration between Pelalawan Regency and Institute Technology Bandung to develop the Pelalawan Smart City concept.

EDUCATION

Scholarship



Provide 400 scholarships annually. In 2022 48% of our university scholarships recipients were women.

Assistance



60 Primary schools
11 Universities and Vocational School

Schools Improvement



Increase number of partner schools to 172 primary schools across five regencies in Riau.

EMPOWERMENT

Assistance



77 Farmer groups
178 villages



Collaborate with Krealogi to improve MSME digital literacy, marketing, supply chain management to increase business sustainability

242 SMEs inline groups

in 6 sectors

- Transportation
- Water truck
- Labour supply
- Harvesting service
- Construction
- Material Supply

Women participation



APRIL promotes equal opportunity and diversity in the workplace and eliminate all forms of discrimination and harassment



29% increased representation of women participating in our CD Program.



20% of women employee in the workforce



PULP PRODUCTS

APRIL Group is the leading Bleached Hardwood Kraft Pulp supplier in Asia and uses advanced manufacturing processes to produce pulp of premium quality. Our plantation pulp products are PEFC certified and PEFC Controlled Sources as they are sourced from sustainably managed forest and from non controversial sources, which uphold ecological, economic and social values.

Pulp is the basis of many paper products, ranging from the corrugated boards used in factories to our daily necessities like paper, tissue, tea bags and magazines. In order to meet the different end-use ever demanding requirements of fibres, we customize and develop a series of BP products known as the "Best Pulp Series" (BPS) for tissue, specialty paper, Board and Printing & Writing. APRIL pulp has been used globally in a wide variety of applications due to its excellent formation and opacity, low coarseness and its balanced fiber properties.

APRIL provides consultative and tailored-made solutions at the customer's premises combining and matching its customized pulp with its deep understanding in process and application know-how. By systematically analysing our customers' entire paper making process, from furnish, raw material inputs, and manufacturing to finished product requirements, APRIL paper technologists aim to partner with our customers through the innovative use of fiber, identifying optimization opportunities for improved Total Cost of Ownership (TCO), as well as enhanced product quality in the production line. This business model of QPC - Quality, Productivity and Cost serve us as our key drivers of our business to create value for our customers.

HOW IS PULP MADE?

To make pulp, small wood chips are processed and treated to create a mixture. The mixture is then cooked to release the natural glue that bonds wood fibres together. The mixture is washed for further processing and bleaching to ensure that the final product is whiter, more absorbent and resistant.

The principal by-product from cooking of wood chips is lignin, which in the form of black liquor is used as fuel in the recovery boilers to generate steam and power, which are then used to power up the production process.

When the pulp is dried, finished and baled, it is shipped to our customers to make it into a wide variety of end products.



PAPER PRODUCTS

PaperOne™, a premium quality paper brand designed for the most demanding high-speed printing and copying tasks, was launched by APRIL Group on 6 May 1998.

Determined to make PaperOne™ a clear industry leader, we benchmarked our home, office and commercial printing paper products against top international paper brands across all areas, including thickness, opacity and archival qualities. The moisture-proof wrappers of PaperOne™ products were meticulously designed, from the choice of colors and logo typeface to the strategic placement of product information. We also ensured that our PaperOne™ carton boxes would be reusable, ergonomic and lightweight.

PaperOne™ debuted in the most demanding international markets in 1998, launching in the USA, Europe and Japan. Today, our global brand PaperOne™ is sold in more than 110 countries, delivering consistent professional printing quality with minimal environmental impact.

In recognition of its environmental stewardship, APRIL Group was awarded the PEFC Sustainable Forest Management certification in June 2015 for making products from 100% renewable fibers and sustainable sources.

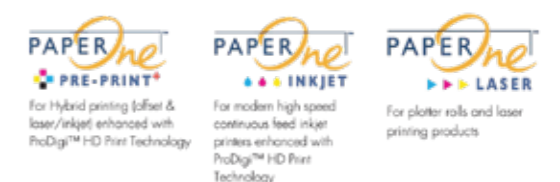
PaperOne™ offers a comprehensive range of Office paper products, as well as Printing & Publishing paper and Digital paper for commercial purposes (offset, digital, hybrid printing and converting), available in both roll and folio form.



Printing & Publishing Paper



Digital Paper



PAPERBOARD PRODUCTS

We offers a comprehensive range of paperboard products such as FBB GC1, FBB GC1 Hi-Bulk, FBB GC2, FBB GC2 OBA Free, Art Board as well as Cup Stocks for commercial purpose which available in both roll and folio form. These paperboards are suitable for cosmetics, electronics appliance, healthcare, pharmaceutical, gift box, and retail ready packaging. Moreover, paperboards are safe for food packaging and to be used in the food services industry.

BoardOne™ customers are merchants, converters and product owners from the Americas, Europe, Middle East and Asia markets. As BoardOne™ strives to create values for our customers in a reliable manner, we pay attention to every details to produce premium and consistent quality paperboards. The flatness and smoothness of the paperboard provide consistent printing and make colors appear more vibrant and sharp. Besides visual appearance, the strong packaging is supported with high stiffness CD/MD and strong folding endurance of the paperboards. As result, converters can improve their productivity and financially cost savings. For the product owners who aim to differentiate their goods from competitors, the desirable packaging outcome can be achieved with the complement of professional designs, packaging development and printing technology.

Supply disruptions can cause severe operational and financial consequences to both business partners and customers. APRIL has incorporated vertically integrated production which means the organization takes direct ownership of various stages of the production process rather than relying on external contractors and suppliers. This strategy allows BoardOne™ to secure its pulp supply with less susceptible to major disruptions in the present or future, such as overplanting or lack of workers. Moreover, the quality of pulp supplied is constantly monitored by the lab to ensure its meets the specific quality standard. When the paperboards are produced, customers can expect the consistent high quality and control their production cost with minimum wastage.

APRIL is committed to driving positive change across our value chain and continuing to grow our business responsibly. The production facilities have been certified under the PEFC Chain of Custody (CoC) certification, which ensures that our wood pulp is legally sourced from sustainably managed plantation forests. Furthermore, BoardOne™ is certified by the Indonesian Timber Legality Assurance System, Food and Drug Administration, ISEGA, REACH, ISO 90001, 14001 and 45001 and Halal certificates.



**Premium quality paperboard
made with 100% renewable fibers
and sustainable sources**



PROGRAMME FOR THE ENDORSEMENT OF FOREST CERTIFICATION (PEFC)

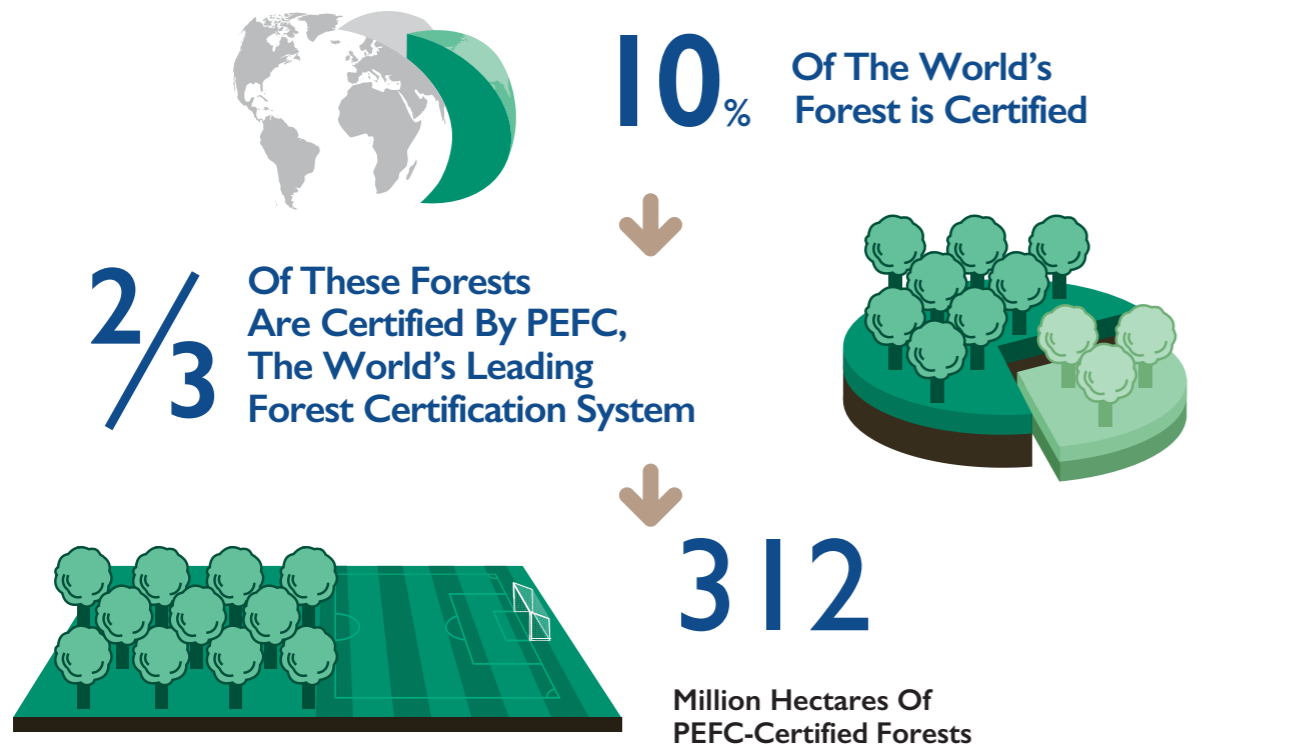


APRIL Group's pulp and paper products are PEFC-certified.

PEFC-certification is a transparent system of forest inspection plus a means of tracking timber and paper, from harvested tree through to the finished product.

PEFC is your assurance that wood for pulp and paper products comes from forests that are sustainably managed.

WORLD FOREST CERTIFICATION

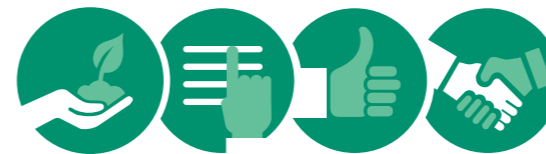


Developed Countries Account For **90%** of PEFC-Certified Forests

- Developed Country
- Developing Country
- APRIL Group is the first to achieve PEFC Sustainable Forest Management Certification in Indonesia



BENEFITS OF BUYING PRODUCTS WITH THE PEFC LABEL:



- You demonstrate your support for the sustainable management of forests around the world.
- You help to protect forests for present and future generations.
- You help to promote the responsible sourcing of pulp and paper products.
- You help to combat illegal logging.

87%

of Customers Trust PEFC Labels To Make Informed Choices*

resulting in an increased demand for sustainable paper and procurement

*PEFC/GfK Global Consumer Survey – October 2014

PEFC's Sustainable Forest Management (SFM) Certification

recognises forestry operations that maintain a forest's ecological, social and economic values while the Chain of Custody (CoC) certification plays an important role in ensuring the traceability of wood from its origin through the entire supply chain, from the forests to you.

